

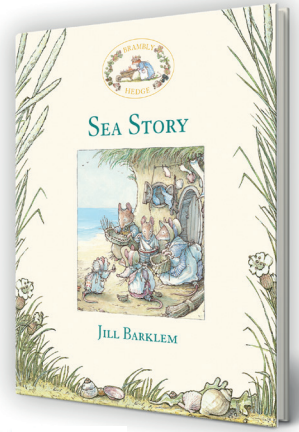


# BRAMBLY HEDGE

## SEA STORY PICTURE SEARCH



wildlife  
watch



Circle the following things when you find them in the picture above.

- A fish
- 4 portholes
- A chimney
- A blue and white cushion
- The ship's rudder
- An open window
- An apron
- Wilfred in his red and white striped top
- A waving Primrose mouse
- A large wooden door
- A cuddly bunny  
(clue: you'll find it on a bed if you look really closely)

